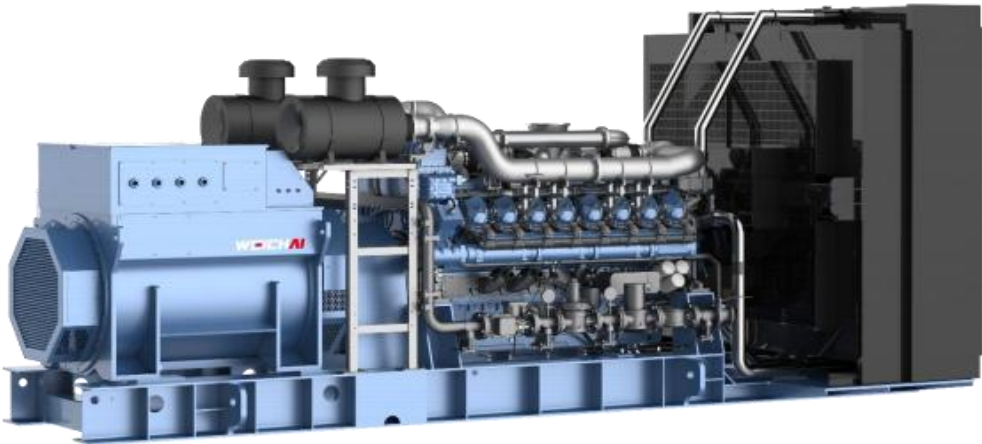


# ANT ENERGY GEN-SETS DATASHEET



## ANT ENERGY GEN-SETS DATASHEET

### Gen-set specifications

Model	WPG1375B ( C ) 7NG
Prime Rating kVA/kWe	1375/1100
Continual Rating kVA/kWe	1375/1100
Voltage V	400/230
Frequency Hz	50
Power Factor	0.8(lagging)
No. of Phases	3
Sound@7m ( dB(A) )	Open : ≤96 dB ( A ) ; Silence : ≤85 dB ( A )
Ambient temp ( °C )	-10 ~ 40 ( If < -10 , oil and water heating; If > 40 , power correction )
Altitude(m)	≤1500
Fuel	Pipeline natural gas ; MN≥88
Gas supply pressure(kPa)	Max.50 (Special pressure, contact with company)
Steady-state voltage deviation	≤±5%
Transient voltage deviation ( as follow sudden load decrease/increase )	+35% ~ -25%
Voltage steady time(s)	10
Steady-state frequency band	≤2.5%
Transient frequency deviation from rated frequency (sudden power decrease/increase)	30% to 0, or 10% at high load, sudden load decrease≤+18% ; 0-30% sudden load increase≤-25%
Frequency steady time(s)	10

### Standard Features

◆ ECU	◆DC24 Electric starter	◆ DSE8610MKII
◆ Closed water-cooled	◆ IP23	◆H type insulation
◆ Air filter	◆ Muffler	◆ Circuit Breaker
◆Starting batteries	◆ with connective wires	◆ Radiator
◆Oil Drain Valve	◆Forklift Groove	◆Shock Absorber
◆ Color	Weichai blue (B)/white (C)	
◆ Packaging	Packing case(B)/Wrapping sheet(C)	

### Options

◇Voltage380V/400V	◇Voltage 415V/440V	◇Voltage 6.3kV/10.5kV /13.8kV
◇Single Voltage 220V/230V/240V	◇Automatic Transfer Switch	◇Automatic Parallel system
◇Engine Heater (water)	◇Engine Heater (oil)	◇Alternator heater
◇PMG/AREP		

☞ Baudouin 16M33NG series, 16 cylinder, V type, 4 stroke, radiator cooled engine

- ☞ Well-designed air handling system with
  - Replaceable paper element air cleaner with restriction indicator
  - Air to air after cooling
  - Optimized turbocharger for increased altitude capabilities
  - High efficiency, large heat area inter cooler, reduce the air temperature after the inter cooler
- ☞ NG gas regulator
- ☞ NG gas filter
- ☞ Standard integral set-mounted radiator system, designed and tested for 40°C ambient temperature
- ☞ Electrical starter motor with soft start engagement feature
- ☞ Intelligent fuel injection technology to start fast guarantee
- ☞ Battery charging alternator
- ☞ 24 V DC batteries



☞ Brushless type, Screen protected, Revolving field, Self-excited alternator conforming to IEC

60034-1

- ☞ Best in class efficiency
- ☞ Steel casing
- ☞ Compact design with sealed bearings for longer life and lesser maintenance
- ☞ IP23 standard protection level
- ☞ Impregnation on all wound components for better mechanical strength



**The DSE8610MKII is an Auto parallel Control**

## Control Module Specifications

- ☞ 3 Phase generator and 3 Phase Mains monitoring
- ☞ Monitoring speed, frequency, voltage, current, oil pressure, coolant temperature
- ☞ Display warning, shutdown and engine status information
- ☞ Hours counter provides accurate information for monitoring and maintenance



## ANT ENERGY GEN-SETS DATASHEET

Engine specifications			
Make	BAUDOQUIN		
Mode	16M33G6N0/5		
Rated Speed r/min	1500		
Prime Power kW	1280		
Cooling	Close Liquid cooled		
Governor	ECU		
Aspiration	Turbocharged, Inter-cooled		
No. of cylinders	16, V type		
Bore (mm) x Stroke (mm)	150x185		
Displacement (L)	52.3		
Starting system	24VDC Electrical		
Total coolant capacity engine/tank (L)	130/NA		
Radiator design temperature (°C)	40		
Lubrication system capacity (L)	171		
Load rate (%)	100%	75%	50%
Fuel consumption (kg/h)	230.2	178.1	126.2
Engine high water heat quantity(kJ/s)	560.0	469.2	369.9
Engine high water flow(m <sup>3</sup> /h)	92.9	92.8	92.8
Engine high water inlet/outlet Tem. (°C)	85.1/91.3	86.3/91.5	86.8/90.9
Engine high water inlet/outlet Pre. (kPa)	-5.8/109	-5.9/110	-6.1/110
Exhaust gas heat quantity(kJ/s)	832.5	681.2	492.5
Exhaust gas flow (kg/h)	6264.0	4848.1	3339.2
Exhaust Temperature (°C)	459	475	502
Exhaust back pressure (mbar)	50		
Exhaust Temperature after recycle(°C)	Heating water120/0.5Mpa steam 190/1MPa steam 220		

Alternator specifications	
Make	LEROY-SOMER
Alternator Frame	LSA 50.2 L8
Exciter Type	Self-excitation
Enclosure	IP23
Voltage regulation	≤ ±1%
Class of Insulation	H
Winding Pitch	2/3
Rotor	Double bearings

**Remarks**

**Prime Rating ( PRP ) :**

Prime power is defined as being the maximum power which a generating set is capable of delivering continuously while supplying a available electrical load when operated for an unlimited number of hours per year under the agreed operating conditions with the maintenance intervals and procedures being carried out as prescribed.

**Continual Rating (COP):**

These ratings are applicable for supplying continuous electrical power (at 100% load) in the event of a utility power failure. There is no limitation to the annual hours of operation under the agreed operating conditions with the maintenance intervals and procedures being carried out as prescribed.

**Standard Reference Conditions**

Standard operating environment: ambient temperature is -10°C~40°C, the altitude is less than 1000m, the relative humidity is less than 90%(25°C) and there is no dust\stand dust\salt fog\mold\condensation environment, etc.

Fuel consumption data at full load with gas fuel with specific gravity of 0.726 kg/N m<sup>3</sup> and low calorific value of 47.9 MJ/kg.

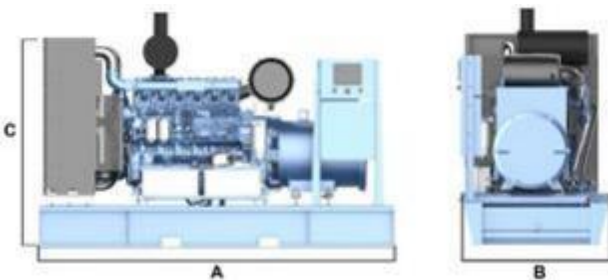
If the operating environment exceeds the above requirements, please contact with the factory.

**Typical Genset Dimensions**

Genset Model	Length A(mm)	Width B(mm)	Height C(mm)	Wet Weight (kg)	Note
WPG1375B7NG	6090	2300	2900	12300	
WPG1375C7NG	12192	2438	2896	19900	

Note: This size cannot be used for design, for design, please contact with company.

**Open genset**



**Silence genset**

