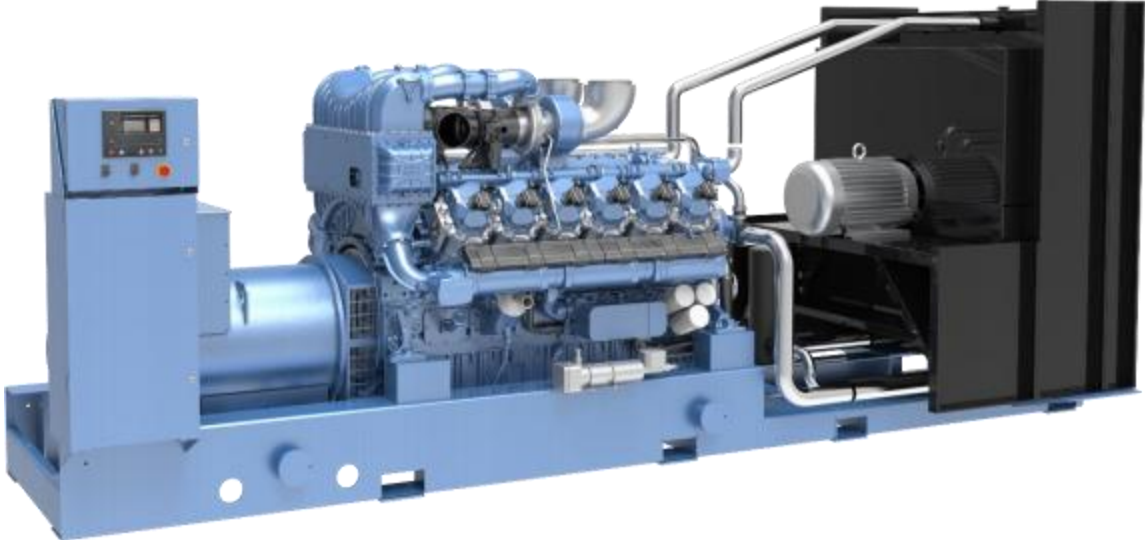


ANT ENERGY GEN-SETS DATASHEET



ANT ENERGY GEN-SETS DATASHEET

Gen-set specifications

Model	WPG1000B (C) 7NG
Prime Rating kVA/kWe	1000/800
Continual Rating kVA/kWe	1000/800
Voltage V	400/230
Frequency Hz	50
Power Factor	0.8(lagging)
No. of Phases	3
Sound@7m (dB(A))	Open : ≤ 92.1 dB (A) ; Silence : ≤ 85 dB (A)
Ambient temp (°C)	-10 ~ 40 (If < -10 , oil and water heating; If > 40 , power correction)
Altitude(m)	≤ 2000
Fuel	Pipeline natural gas ; MN ≥ 80
Gas supply pressure(kPa)	Max. inlet 50 (Special pressure, contact with company)
Steady-state voltage deviation	$\leq \pm 5\%$
Transient voltage deviation (As follow sudden power decrease/increase)	+35% ~ -25%
Voltage steady time(s)	10
Steady-state frequency band	$\leq 2.5\%$
Transient frequency deviation from rated frequency	100% sudden power decrease , / ; 0-26% sudden power increase $\leq -25\%$
Frequency steady time(s)	10

Standard Features

◆ ECU	◆ DC24 Electric starter	◆ DSE 7320
◆ Closed water-cooled	◆ IP23	◆ H type insulation
◆ Air filter	◆ Muffler	◆ Circuit Breaker
◆ Starting batteries (Maintenance-Free)	◆ with connective wires	◆ Radiator
◆ Oil Drain Valve	◆ Forklift Groove	◆ Shock Absorber
◆ Color	Weichai blue (B)/beige canopy and black chassis (L)	
◆ Packaging	Packing case(B)/Wrapping sheet(L)	

Options

◇ Voltage 380V/400V	◇ Voltage 415V/440V	◇ Voltage 6.3kV/10.5kV /13.8kV
◇ Single Voltage 220V/230V/240V	◇ Automatic Transfer Switch	◇ Automatic Parallel system
◇ Engine Heater (water)	◇ Engine Heater (oil)	◇ Alternator heater
◇ PMG/AREP		

- ☞ Well-designed air handling system with
 - Replaceable paper element air cleaner with restriction indicator
 - Air to air after cooling
 - Optimized turbocharger for increased altitude capabilities
 - High efficiency, large heat area inter cooler, reduce the air temperature after the inter cooler
- ☞ NG gas regulator
- ☞ NG gas filter
- ☞ Standard integral set-mounted radiator system, designed and tested for 40°C ambient temperature
- ☞ Electrical starter motor with soft start engagement feature
- ☞ Intelligent fuel injection technology to start fast guarantee
- ☞ Battery charging alternator
- ☞ 24 V DC batteries



- ☞ Best in class efficiency
- ☞ Steel casing
- ☞ Compact design with sealed bearings for longer life and lesser maintenance
- ☞ IP23 standard protection level
- ☞ Impregnation on all wound components for better mechanical strength



The DSE 7320 is an Auto Mains Failure Control Module

- ☞ Back-lit LCD display
- ☞ 3 Phase generator and 3 Phase Mains monitoring
- ☞ Monitoring speed, frequency, voltage, current, oil pressure, coolant temperature
- ☞ Display warning, shutdown and engine status information
- ☞ Hours counter provides accurate information for monitoring and maintenance



ANT ENERGY GEN-SETS DATASHEET

Engine specifications			
Make	Baudouin		
Mode	12M33G10N0/5		
Rated Speed r/min	1500		
COP Power kW	900		
Cooling	Close Liquid cooled		
Governor	ECU		
Aspiration	Turbocharged, Inter-cooled		
No. of cylinders	12, V type		
Bore (mm) x Stroke (mm)	150x185		
Displacement (L)	39.2		
Starting system	24VDC Electrical		
Total coolant capacity engine/tank (L)	75.94/NA		
Radiator design temperature (°C)	40		
Lubrication system capacity (L)	146		
Load rate (%)	100	75	50
Fuel consumption (kg/h)	161.09	122.78	87.31
Engine high water heat quantity(kJ/s)	401.6	300.3	183.2
Engine high water flow(m ³ /h)	80.6	79.2	78.5
Engine high water inlet/outlet Tem. (°C)	94.1/89.0	91.9/88.0	90.0/87.6
Engine high water inlet/outlet Pre. (kPa)	0.4/215	0.4/204.6	0.4/196.7
Exhaust gas heat quantity(kJ/s)	703.3	553.5	391.5
Exhaust gas flow (kg/h)	3968	3041	2107
Exhaust Temperature (°C)	575	596	584
Exhaust back pressure (mbar)	75		
Exhaust Temperature after recycle(°C)	Heating water120/0.5Mpa steam 190/1MPa steam 220		

Alternator specifications	
Make	LEROY-SOMER
Alternator Frame	TAL A49 E
Exciter Type	Self-excitation
Enclosure	IP23
Voltage regulation	≤ ± 1%
Class of Insulation	H
Winding Pitch	2/3
Rotor	Double bearings

Remarks

Prime Rating (PRP) :

Prime power is defined as being the maximum power which a generating set is capable of delivering continuously while supplying a available electrical load when operated for an unlimited number of hours per year under the agreed operating conditions with the maintenance intervals and procedures being carried out as prescribed.

Continual Rating (COP):

These ratings are applicable for supplying continuous electrical power (at 100% load) in the event of a utility power failure. There is no limitation to the annual hours of operation under the agreed operating conditions with the maintenance intervals and procedures being carried out as prescribed.

Standard Reference Conditions

Standard operating environment: ambient temperature is -10°C~40°C, the altitude is less than 1000m, the relative humidity is less than 90%(25°C) and there is no dust\stand dust\salt fog\mold\condensation environment, etc.

Fuel consumption data at full load with gas fuel with specific gravity of 0.726 kg/N m3 and low calorific value of 47.9 MJ/kg.

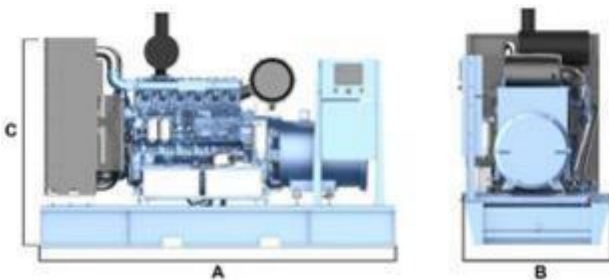
If the operating environment exceeds the above requirements, please contact with the factory.

Typical Genset Dimensions

Genset Model	Length A(mm)	Width B(mm)	Height C(mm)	Wet Weight (kg)	Note
WPG1000B7NG	6378	2192	2593	8800	
WPG1000C7NG	12192	2438	2591	16400	

Note: This size cannot be used for design, for design, please contact with company.

Open genset



Silence genset

