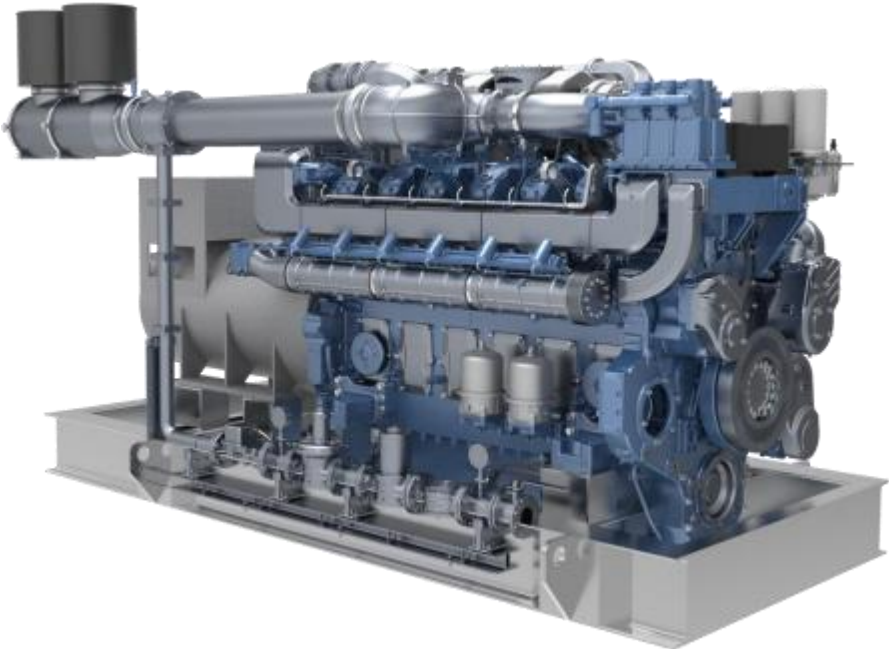


# ANT ENERGY GEN-SETS DATASHEET



## ANT ENERGY GEN-SETS DATASHEET

### Gen-set specifications

Model	WPG1750B ( C ) 7NG
Prime Rating kVA/kWe	1750/1400
Continual Rating kVA/kWe	1750/1400
Voltage V	400/230
Frequency Hz	50
Power Factor	0.8(lagging)
No. of Phases	3
Sound ( dB(A) )	Open : ≤125 dB ( A ) @1m ; Silence : ≤85 dB ( A ) @7m
Ambient temp (°C)	-10~40 ( If < -10 , oil and water heating; If > 40 , power correction )
Altitude(m)	≤1000
Fuel	Pipeline natural gas ; MN≥85
Gas supply pressure(kPa)	Max. inlet 50 (Special pressure, contact with company)
Steady-state voltage deviation	±5
Transient voltage deviation ( as follow load decrease/ increase )	+35%~-25%
Voltage steady time(s)	10
Steady-state frequency band	±2.5%
Transient frequency deviation from rated frequency (100% sudden power decrease/30% increase)	60% to 0, or 10% at 80%-100% sudden load decrease≤+18% ; 30% sudden load increase≤-25%
Frequency steady time(s)	10

### Standard Features

◆ ECU	◆DC24 Electric starter	◆ DSE8610MKII
◆ Closed water-cooled	◆ IP23	◆H type insulation
◆ Air filter	◆ Muffler	◆ Circuit Breaker
◆Starting batteries	◆ with connective wires	◆ Radiator
◆Oil Drain Valve	◆Forklift Groove	◆Shock Absorber
◆ Color	Weichai blue (B)/white (C)	
◆ Packaging	Packing case(B)/Wrapping sheet(C)	

### Options

◇Voltage 380V/400V	◇Voltage 415V/440V	◇Voltage 6.3kV/10.5kV /13.8kV
◇Single Voltage 220V/230V/240V	◇Automatic Transfer Switch	◇Automatic Parallel system
◇Engine Heater (water)	◇Engine Heater (oil)	◇Alternator heater
◇PMG/AREP		

- Well-designed air handling system with
  - Replaceable paper element air cleaner with restriction indicator
  - Air to air after cooling
  - Optimized turbocharger for increased altitude capabilities
  - High efficiency, large heat area inter cooler, reduce the air temperature after the inter cooler
- NG gas regulator
- NG gas filter
- Standard integral set-mounted radiator system, designed and tested for 40°C ambient temperature
- Electrical starter motor with soft start engagement feature
- Intelligent fuel injection technology to start fast guarantee
- Battery charging alternator
- 24 V DC batteries



60034-1

- Best in class efficiency
- Steel casing
- Compact design with sealed bearings for longer life and lesser maintenance
- IP23 standard protection level
- Impregnation on all wound components for better mechanical strength



## Control Module Specifications

**The DSE8610MKII is an Auto parallel Control Module**

- Back-lit LCD display
- 3 Phase generator and 3 Phase Mains monitoring
- Monitoring speed, frequency, voltage, current, oil pressure, coolant temperature
- Display warning, shutdown and engine status information
- Hours counter provides accurate information for monitoring and maintenance



## ANT ENERGY GEN-SETS DATASHEET

Engine specifications			
Make	BAUDOUIN		
Mode	12M55G6N0/5		
Rated Speed r/min	1500		
Prime Power kW	1588		
Cooling	Close Liquid cooled		
Governor	ECU		
Aspiration	Turbocharged, Inter-cooled		
No. of cylinders	12, V type		
Bore (mm) x Stroke (mm)	180x215		
Displacement (L)	65.65		
Starting system	24VDC Electrical		
Total coolant capacity engine/tank (L)	650/NA		
Radiator design temperature (°C)	40		
Lubrication system capacity (L)	380		
Load rate (%)	100%	75%	50%
Fuel consumption (kg/h)	278.2	213.9	150.2
Engine high water heat quantity(kJ/s)	510	310	171
Engine high water flow(m <sup>3</sup> /h)	83.0	82.4	81.3
Engine high water inlet/outlet Tem. (°C)	88.5/94.8	90.4/94.2	90.9/93.1
Engine high water inlet/outlet Pre. (kPa)	30.8/295.1	29.6/294.8	28.5/293.3
Exhaust gas heat quantity(kJ/s)	1191	936	667
Exhaust gas flow (kg/h)	7941	6023	4200
Exhaust Temperature (°C)	L:507/R:500	L:528/R:510	L:559/R:526
Exhaust back pressure (mbar)	75		
Exhaust Temperature after recycle(°C)	Heating water120/0.5Mpa steam 190/1MPa steam 220		

Alternator specifications	
Make	LERY-SOMER
Alternator Frame	LSA 52.3 S5
Exciter Type	Self-excitation
Enclosure	IP23
Voltage regulation	≤± 1 %
Class of Insulation	H
Winding Pitch	2/3
Rotor	Double bearings

## Remarks

### Prime Rating ( PRP ) :

Prime power is defined as being the maximum power which a generating set is capable of delivering continuously while supplying a available electrical load when operated for an unlimited number of hours per year under the agreed operating conditions with the maintenance intervals and procedures being carried out as prescribed.

### Continual Rating (COP):

These ratings are applicable for supplying continuous electrical power (at 100% load) in the event of a utility power failure. There is no limitation to the annual hours of operation under the agreed operating conditions with the maintenance intervals and procedures being carried out as prescribed.

## Standard Reference Conditions

Standard operating environment: ambient temperature is  $-10^{\circ}\text{C}\sim 40^{\circ}\text{C}$ , the altitude is less than 1000m, the relative humidity is less than 90%( $25^{\circ}\text{C}$ ) and there is no dust\stand dust\salt fog\mold\condensation environment, etc.

Fuel consumption data at full load with gas fuel with specific gravity of 0.726 kg/N m<sup>3</sup> and low calorific value of 47.9 MJ/kg.

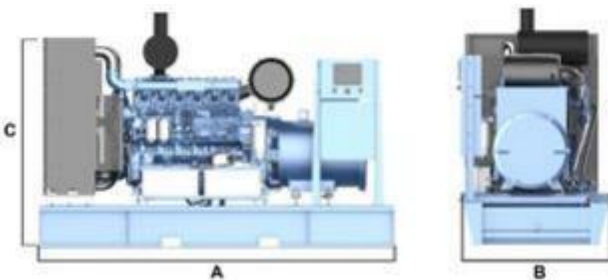
If the operating environment exceeds the above requirements, please contact with the factory.

## Typical Genset Dimensions

Genset Model	Length A(mm)	Width B(mm)	Height C(mm)	Wet Weight (kg)	Note
WPG1750B7NG	6970	2680	2960	21000	
WPG1750C7NG	13500	3000	4500	36000	

Note: This size cannot be used for design, for design, please contact with company.

Open genset



Silence genset

